

# BRUCE MATHER

INDEPENDENT ESTATE AGENT

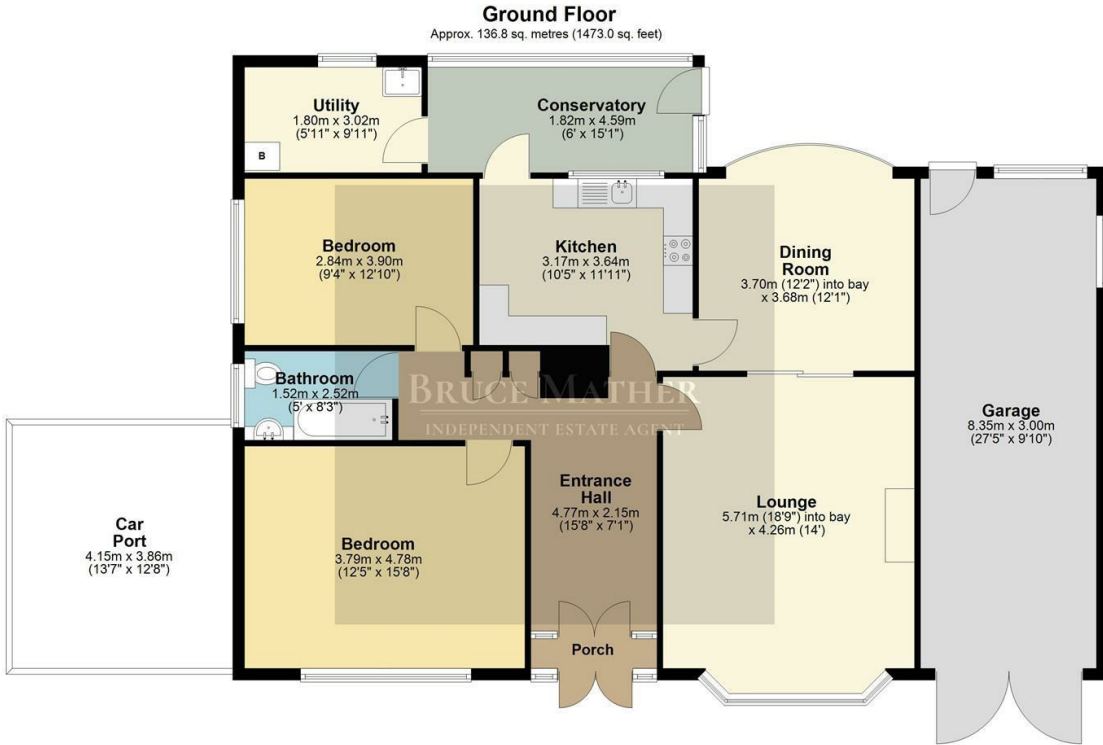


**8 Leagate Road, PE22 7BP**

**Asking Price £210,000**

A detached bungalow with a large parking area to the front for campervans or caravans and the like, with a private rear garden located in Gipsy Bridge, approximately 5.6 miles NW of Boston. The sizeable entrance porch has the two bedrooms and family bathroom to the left and lounge which opens onto the dining room on the right, straight ahead is kitchen which leads to a conservatory overlooking the garden and into the utility room. The home would benefit from some redecorating but offers great potential and is a good size. The rear garden is a good size, a carport to the side and an abundance of parking to the front. Gipsy Bridge is a small village outside Boston which is where you would go for amenities. Please call Bruce Mather Estate Agents on 01205 365032 to arrange a viewing.

# Floor Plan



Total area: approx. 136.8 sq. metres (1473.0 sq. feet)

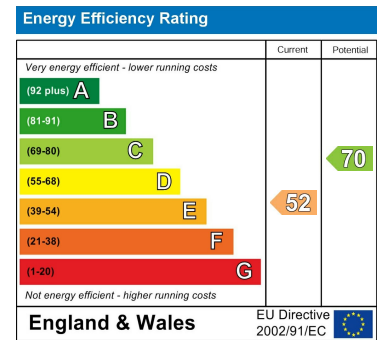
All images used are for illustrative purposes. Images are for guidance only and may not necessarily represent a true and accurate depiction of the condition of property. Floor plans are intended to give an indication of the layout only. All images, floor plans and dimensions are not intended to form part any contract.  
Plan produced using PlanUp.



# Area Map



# Energy Efficiency Graph



These particulars, whilst believed to be accurate are set out as a general outline only for guidance and do not constitute any part of an offer or contract. Intending purchasers should not rely on them as statements of representation of fact, but must satisfy themselves by inspection or otherwise as to their accuracy. No person in this firm's employment has the authority to make or give any representation or warranty in respect of the property.

6 Pump Square, Boston, Lincs, PE21 6QW

Tel: 01205 360 387 Email: sales@brucemather.co.uk brucemather.co.uk